



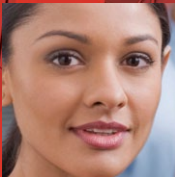
International Facility Management Association

Empowering Facility Professionals Worldwide

Learn.

Connect.

Advance.™





International Facility Management Association

Learn.
Connect.
Advance.™

Empowering Facility Professionals Worldwide

IFMA is the world's largest and most widely recognized international association for professional facility managers, supporting more than 20,000 members in 78 countries. The association's members, represented in 126 chapters and 16 councils worldwide, manage more than 37 billion square feet of property and annually purchase more than US\$100 billion in products and services. Formed in 1980, IFMA certifies facility managers, conducts research, provides educational programs and produces World Workplace, the world's largest facility management conference and exposition. To join and follow IFMA's social media outlets online, visit the association's LinkedIn, Facebook, YouTube and Twitter pages. For more information, visit the IFMA press room or www.ifma.org.

What is FM?

Facility management is a profession that encompasses multiple disciplines to ensure functionality of the built environment by integrating people, places, processes and technology.

International Facility Management Association

1 E. Greenway Plaza, Suite 1100
Houston, Texas 77046-0104 USA

T: +1-713-623-4362

F: +1-713-623-6124

Email: ifma@ifma.org

Web: www.ifma.org

IFMA shapes careers, influences the profession and strengthens the facility management community.



Education

“The field of facility management demands adaptability to change. How do I keep up?”

IFMA’s educational curriculum, credentialing programs, and facility- and leadership-focused events help you strengthen your workplace skills, increasing your value as an indispensable member of the business team.



Information

“I need the information to bring a higher level of service and expertise to my organization.”

As an IFMA member, you have access to continuing education, industry research, benchmarking and best practices, knowledge sharing, and timely and relevant information—all geared toward helping you improve the performance of your facility.



Interaction

“I want to exchange ideas, challenges and solutions with others in my profession.”

The IFMA community is united by a common interest in strengthening the resources and opportunities available to their profession. Social media outlets and online communities provide instant access to FMs around the world, allowing you to share notes about what other FMs are doing in their organizations.

IFMA is...

- The name facility professionals trust for their career development and networking needs
- The recognized leader in facility management education and professional credentialing
- Your best choice for industry news, career support and FM-specific resources
- The leading authority on facility management, based on the association’s thorough understanding of the facility management community’s professional needs



How does IFMA membership benefit you?

- Enriches your career
- Broadens your professional network
- Supports your position as an authority on the built environment
- Keeps you up-to-date with the latest industry trends and best practices from around the world
- Brings a new level of professionalism and excellence to the management of your facility

Some of the many member benefits include:

- Worldwide knowledge sharing with your peers
- Access to IFMA's members-only website and online community, which offers peer support on specific areas of interest through special interest groups such as the Between Jobs Community and Sustainability SIG
- Discounts on FM publications, research reports, industry surveys, courses and events
- Bimonthly issues of IFMA's award-winning magazine, the *Facility Management Journal*
- Two e-newsletters, the WIRE and the IFMA Insider



IFMA represents the facility management profession on an international level, helping professionals worldwide improve practices and compare standards.

Strategic Partnerships

Through our professional networks with other organizations concerned with the built environment, we have the ability to close international, informational and generational gaps for the benefit of the entire FM community.

Government Relations

IFMA maintains an office in Washington, D.C., to serve as an informational resource for and to provide expertise to public policy makers, regulators and other federal officials. IFMA also conducts public policy forums on Capitol Hill and participates in government relations activities in the European Union, Canada and China, among others.



IFMA **members** share knowledge, answers and insights about managing the built environment.

Chapters

Local networking and career support through 126 geographic chapters worldwide. Professional and personal development through monthly meetings, educational courses, social functions and facility tours.

Chapter-specific benefits may include:

- Local membership directory
- Employment referral services
- Professional development
- CFM® study groups
- Chapter-specific websites
- Leadership opportunities


Councils

Council members connect with other professionals who share an interest in a specific facility management practice or who work in the same business sector. More than 9,000 members are affiliated with IFMA's 16 councils:

 - Academic Facilities

 - Airport Facilities

 - Banking Institutions & Credit Unions


 - City and Country Clubs

 - Corporate Facilities

 - Corporate Real Estate

 - Environmental Health & Safety

 - FM Consultants

 - Health Care

 - Information Technology

 - Legal Industry

 - Manufacturing Facilities

 - Museums and Cultural Institutions

 - Public Sector Facilities

 - Research & Development Facilities

 - Utilities

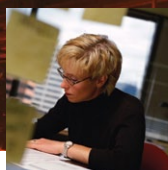
Council-specific benefits may include:

- Targeted newsletters and directories
- Benchmarking and best practices studies
- Online Community and webinars
- Council-specific websites

Communities of Practice

Sharing highly targeted information in particular areas of expertise, these professional networks keep members current on the latest practices, products and technologies specific to industries they support.

- Hospitality FM & Engineering
- Restaurant & Food Service FM
- Religious Facilities
- Casino and Gaming Facilities
- Retail Facilities
- Data Center Facilities



Professional Credentialing

Recognizing proficiency and high performance is vital to the global economy. More than ever before, public and private employers and government agencies rely on professional credentialing programs to complement the knowledge and abilities of practicing facility managers.



Certified Facility Manager®: Recognized globally as the premier certification in facility management. IFMA's competency-based CFM program assesses professional expertise through a comprehensive exam. CFMs are regarded as a cut above those who have not earned the top credential in the facility management field.



Facility Management Professional: A curriculum-based credential earned by successfully completing a series of courses. The FMP® program is an ideal career path for those who have five years of facility management work experience or less and want to develop their body of knowledge to improve their work performance.



Sustainability Facility Professional™: IFMA's SFP™ is an assessment-based certificate program delivering a specialty credential in sustainability. By earning your SFP, you will develop and gain recognition for your expertise in sustainable FM practices while impacting your organization's triple bottom line.

Online and Instructor-led Courses

IFMA provides educational opportunities, relevant industry information and essential resources that will help ensure the safety, well-being and longevity of your facility.

FM Virtual Resource Center: A variety of educational offerings are available online through IFMA's FM Virtual Resource Center. The VRC features both free and fee-based FM materials and courses that will help facility professionals earn CEUs and keep up with hot topics.

Instructor-led Courses: Delivered at various locations throughout the year. Learn from industry experts, expand your knowledge and interact with instructors and peers.



IFMA keeps you up-to-date with the **latest industry trends** and best practices from around the world.

IFMA Publications

Facility Management Journal: Award-winning bimonthly publication written specifically for professionals who are involved with developing and maintaining productive workplaces.



IFMA WIRE: Biweekly, members-only e-newsletter focusing on activities, opportunities, and products and services available through IFMA.

IFMA Insider: Weekly e-newsletter containing news and information on a variety of topics affecting facility management, human resources, technology and human interest.

IFMA Events



IFMA's World Workplace – The Facility Conference & Expo: The most informative facility management event in the industry. Cutting-edge courses and lectures, special networking activities and the most diverse tradeshow in the U.S. industry.



European Facility Management Conference: Presented annually by IFMA and EuroFM, the EFMC is the most relevant facility management event in Europe.



IFMA Facility Fusion: A fusion of FM-centric education, best practices, solutions and leadership training.



SAME/IFMA Facilities Management Workshop: Brings together federal and military FM's from the public and private sector to focus on the latest industry trends and best practices.



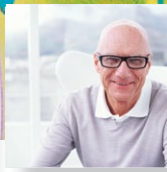
IFMA's World Workplace Asia Conference & Expo: World Workplace offerings expand to Asia, providing a unique opportunity to gain a truly global perspective.

Advocacy Day & Public Policy Forum: Exchange ideas with congressional and industry leaders regarding the future of the built environment.

Spring Council Meetings: Provide council members with the opportunity to meet face-to-face to share best practices, build business relationships, and address issues and concerns specific to varied areas of facility management.

IFMA Research

From industry surveys and benchmarking studies to forecasting and best practice forums, IFMA's research department draws on the practices and opinions of facility management professionals and educators—covering topics vital to the day-to-day operations of facility professionals and the built environment in general.



Membership Classifications

Professional: Facility practitioners and educators, whose primary responsibilities are to provide, oversee or teach one (or more) of the facility management core competencies: communications, finance, human and environmental factors, leadership and management, operations and maintenance, planning and project management, quality assessment and innovation, real estate and technology.

Young Professional: New IFMA members who are under the age of 30 and new or current IFMA members who graduated from an accredited university or college within the last 12 months at the time of application or membership reclassification/renewal. Limited to two years.

Associate: Individuals whose primary responsibilities include: business development; sales and/or marketing as a consultant; representation of a manufacturer, vendor, dealer, distributor; and/or provider of facility-related products and services.

Student: Candidates who are engaged in full-time study at an accredited college or university. At the time the member is no longer engaged in full-time study, he or she shall be reclassified to the appropriate membership category. Verification of full-time student status may be required.

Retired: Members in good standing upon their permanent retirement from full-time facility management practice, business development, sales and/or marketing. (Retired members returning to full-time employment shall be reclassified to the appropriate membership category.)

IFMA Membership Packages

Premium Package

Includes all IFMA benefits plus chapter membership, one council membership, mail delivery of benefits and services, and the opportunity to support the IFMA Foundation.

Basic Package

Includes chapter membership and electronic delivery (via email or through the IFMA website) of benefits and services.

See membership application for these additional fee-based options that maximize your membership:

- **Council Membership(s):** Industry- and interest-specific knowledge sharing. The price of one council membership is included in the Premium Package. Some council memberships are dependent upon the applicant meeting certain membership criteria.
- **Communities of Practice:** Share concerns and best practices specific to industries you support.
- **Mail Delivery Option:** In addition to online access to benefits, you receive a hard-copy of the *Facility Management Journal* and other materials via postal mail service. The price of mail delivery is included in the Premium Package.
- **IFMA Foundation Contribution:** Support the foundation's efforts in FM education, research and scholarships.

All other IFMA offerings (i.e., IFMA's World Workplace registration, professional development courses, bookstore selections) are additional services that will be billed separately.

Look for your Membership Classification and choose a package behind the application.

Apply today at www.ifma.org!